



GAMMON TECHNICAL PRODUCTS, INC.
 P.O. BOX 400 - 2300 HWY 34
 MANASQUAN, N.J. 08736

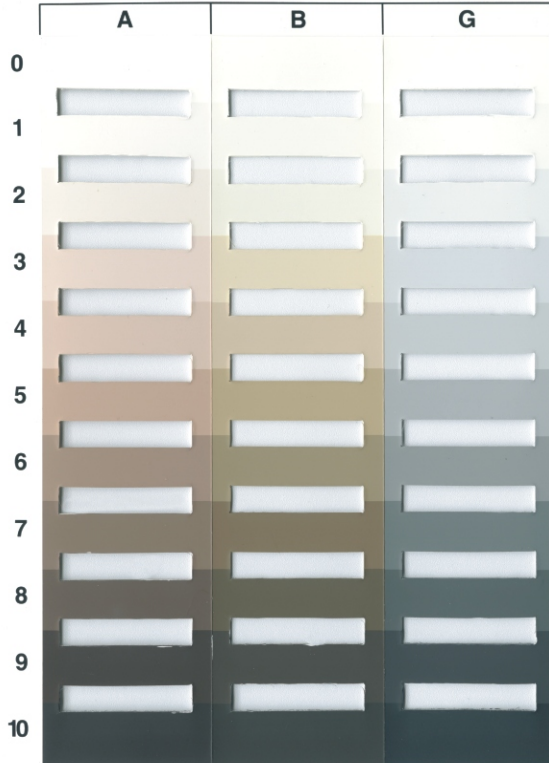
PHONE 732-223-4600
 FAX 732-223-5778
 EMAIL gammontech@gammontech.com

COLOR AND PARTICLE GUIDE

Bulletin 133 (3-94)

**Color and Particle Assessment Rating Guide
 for evaluation of contamination in Jet Fuel**

PROTECT FROM SOILING & EXPOSURE

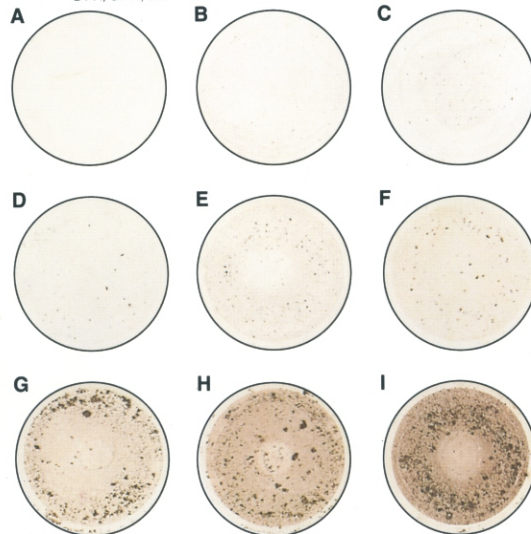


NOTE: The color samples on this chart were produced Nov. 1997 in accordance with Appendix XI of ASTM Test Method D2276/IP216 by GAMMON TECHNICAL PRODUCTS, INC. Manasquan, New Jersey 08736.

SGTP-3940 COLOR AND PARTICLE ASSESSMENT RATING GUIDE

INSTRUCTIONS

1. Place the membrane to be rated under the window having color that most closely matches the shade and color density.
2. Do not place the membrane on top of the color standard. Use the holes for viewing the membrane to obtain the greatest accuracy in comparing shades.
3. Report the rating as B-2, G-4, A-1, etc. If the color density is between two numbers, such as B-4 and B-5, report the lower number.
4. For particle assessment, ignore the background color and match only the visible particles, comparing size and number. Note the value as A through I.
5. A completely assessed membrane rating should be reported by showing the color assessment value first (scale letter and graduation number), followed by the particle assessment value letter. Example, A3-A, B1-A, G7-H, etc.



NOTE: The particle assessment portion of this page has been printed by permission of Shell Oil Co. which holds the copyright.

COLOR RATING -

The colors are in accordance with ASTM D2276 (IP-216) Appendix 3. They have been certified as falling within the Munsell notation limits as specified.

PARTICLE RATING -

The 9 particle photographs have been duplicated faithfully from the Shell Oil Co. chart and by permission of that firm.

In presenting all 33 colors and the 9 particle photographs on one 8½" x 11" chart, our model SGTP-3940 provides convenience that has never before been achieved. Particle assessment is a requirement in Section 2-17 of ATA-103, along with color rating. Particle rating is also specified in Section FO-6 of the United Airlines "Fuel Operations Manual".

The color rating presentation is unique in that oblong windows of adjacent colors are provided so that the technician can more easily compare shades and colors. The filter membrane is placed under the chart, allowing the operator to see 4 different colors at one time for comparison.

The official ASTM color rating booklet, model GTP-1074-1, which we also produce, was designed so that it could be kept closed to protect the colors from soiling and contamination. This new chart is not provided with such a protection means so it must be kept in a notebook. Standard 3-ring punchings are provided. For more information on the color rating book, see Bulletin 80.

NOTE: This black and white reproduction does not show the true colors which are in tan, reddish and gray shades.